

VDL RENA ELECTRONICA

90519005

BITS2POWER® RDM PROTOCOL COMMUNICATION KEY

Product description

- DMX RDM compatible communication interface
- 3-pole XLR connectors
- Rotary address switches
- Power and RDM status LED
- 3 Year Warranty
- CE certified
- IP20

Applied Standards

EN55022

EN55024



Technical notes

Dimensions	115x80x38mm
Weight	170 gr.
Housing	Stainless Steel 430
Color	Blanc

Ordering data

Type	Article number
DMX RDM Protocol	90519005

- ① Tolerance of 5%
- ② Nominal output voltage is # of LEDS x LED forward voltage
- ③ Tolerances of 5% and for each circuit
- ④ Percentage of output current
- ⑤ To be determined



Electrical Characteristics

Input	DMX RDM
Output	DMX RDM

Protections

Short circuit protection	Output current limit
Over voltage	Internally protected

Connections

Output	3-Pole Female XLR connector
Input	3-Pole Male XLR connector

Controls

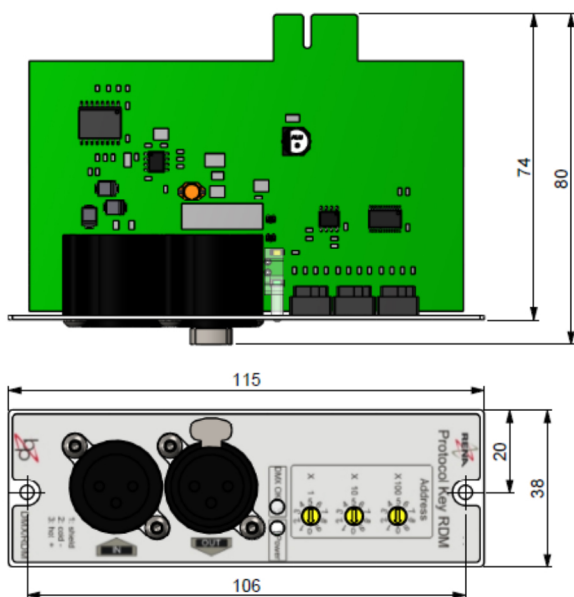
Address switches	Switches set the device's communication address
------------------	---

Technical details

Output	DC voltage Range	-7... 12	V
	Maximum current	60	mA
Input	DC voltage Range	-7... 12	V
	Maximum current	60	mA
Protection	Short Circuit	Limited by RDM line driver	
	Over Current	Limited by RDM line driver	
	Over Voltage	Input protected by TVS diode	
	Withstand Voltage	I/P-O/P: 0,5Kv	
Safety & EMC	Isolation Resistance	I/P-FG: >100MΩ / 500VDC/ 25°C/ 70%RH	
	EMI	EN55022 (CISPR22)	
	EMS IMMUNITY	EN55024, EN61000-4-2, 3, 4, 5, 6, 11	

Mechanical Dimensions

Overall dimensions	L = 115 x W = 80 mm Height = 38 mm
--------------------	---------------------------------------



Electrical connections

Environmental characteristics

Storage temperature	-20 – +85°C
Operating temperature	- 5 – +40°C
Operating humidity	10-95% RH
IP classification	IP20

Installation and Safety Information

Installation must be carried out under observation of the relevant regulations and standards. The following advice must be followed:

- See PDC600 controller manual for system installation details.
- The device contains components that are sensitive to electrostatic discharge and may only be installed in the factory and on site if appropriate EOS/ESD protection measures have been taken.
- For outdoor or damp locations, be aware of the IP classification.

All above specifications must be met in order to qualify for the 3 year warranty.

Packaging

Box size (mm)	127x80x48 mm
Quantity each Box	1
Weight each box (kg)	0,1 kg

Installation

Use screwdriver type PH1 for mounting screws.

XLR Input/Output

Pin	1	Shield
	2	Cold (-)
	3	Hot (+)

